



safety

FOR SAFE
WORKING LIVES

3

STAINLESS STEEL PRODUCTS



CATALOGUE VOL1





STAINLESS STEEL PRODUCTS

3



cromox[®]

APART FROM BEING AN ATTRACTIVE OPTION, STAINLESS STEEL IS RESISTANT TO CORROSION.

Bunzl Safety stocks wire rope and fittings in two common stainless steel grades – Grade 304 and Grade 316.

GRADE 60 LIFTING CHAIN & COMPONENTS	6-11
STAINLESS STEEL WIRE ROPE	12-15
STAINLESS STEEL FERRULES	16
STAINLESS STEEL CHAINS	17
STAINLESS STEEL FITTINGS	18-27

STAINLESS STEEL

BEING RESISTANT TO CORROSION, STAINLESS STEEL IS LARGELY USED IN CORROSIVE APPLICATIONS, IN PARTICULAR MARINE AND WASTE MANAGEMENT ENVIRONMENTS. IT IS ALSO CONSIDERED AN ATTRACTIVE OPTION, IT IS COMMONLY USED IN OTHER APPLICATIONS INCLUDING DECORATIVE BALUSTRADING.

When working in high corrosive environments it is important to ensure you are using the right products to withstand the harsh conditions.

Stainless steel is generally manufactured from both 304 and 316 grade stainless, sourced from the best manufacturers both locally and overseas.

At Bunzl Safety we pride ourselves on supplying only quality and consistent stainless steel products.

304 AND 316 GRADE STAINLESS STEEL

304 Grade stainless steel is considered to be a standard grade. It has excellent resistance to corrosion, however has some limitations in higher corrosive environments.

316 Grade stainless steel, also known as marine grade stainless steel, has a higher corrosion resistance than 304 grade stainless steel and is better in harsher corrosive applications, such as salt water environments.

It is suitable for food and pharmaceutical processing applications and is commonly used on boats, and coastal environments.

CROMOX®

Cromox is a brand of innovative high quality stainless steel lifting products made by Ketten Walder in Germany.

Cromox offers real advantages in terms of resistance, in particular with respect to aggressive environments.

Cromox stainless steel lifting chain and components are specifically designed for use in water, wastewater and sewerage treatment.

Cromox Grade 60 stainless steel lifting chain is manufactured from 316L and 318LN stainless steel and is available in sizes 5mm – 18mm, with a working load limit (WLL) of 630kg to 8000kg.

CROMOX FEATURES:

- Chain slings made of high tensile stainless steel
- Highest corrosion resistance
- Offers the best surface for cleaning and hygiene
- Clean room approved





GRADE 60 CHAIN SLINGS

GRADE 60 LIFTING CHAIN & COMPONENTS

Cromox Chain Slings and Accessories from Ketten Walder provide safety for demanding lifting and heavy-duty transports with superior protection against corrosion in harsh environments and increased longevity. Cromox chain slings are designed in Germany for superior safety and durability.

CROMOX®

GRADE 60 STAINLESS STEEL CHAIN SLINGS

RING-AND HOOK-ENDED SLINGS SIMILAR DIN 5688-1 GRADE 60

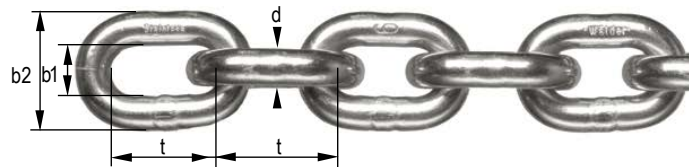
METHOD OF LIFTING ANGLE OF INCLINATION	WILL IN (T)						
	1 LEG		2-LEG, 3-LEG & 4-LEG				
	DIRECT	TIED	DIRECT 60°	DIRECT 90°	TIED 90°	DIRECT 120°	TIED 120°
Nominal chain thickness acc. to DIN 5687							
4	0.40	0.30	0.65	0.55	0.45	0.40	0.30
5	0.63	0.50	1.05	0.85	0.70	0.63	0.50
6	0.90	0.70	1.55	1.25	1.00	0.90	0.70
7	1.25	1.00	2.15	1.75	1.40	1.25	1.00
8	1.55	1.20	2.65	2.15	1.70	1.55	1.20
10	2.45	1.95	4.20	3.45	2.70	2.45	1.95
13	3.85	3.05	6.65	5.40	4.30	3.85	3.05
16	6.00	4.80	10.35	8.40	6.70	6.00	4.80
18	8.00	6.40	13.80	11.20	8.95	8.00	6.40
The above-mentioned working load limits correspond approximately to the following load factors:							
	1.00	0.80	1.73	1.4	1.12	1.00	0.80
The strain must be reduced to 50 % of the W.L.L. for unbalanced lifting.							

CROMOX®

GRADE 60 STAINLESS STEEL LIFTING CHAIN 5MM - 16MM

FEATURES AND BENEFITS

- Suitable for 1 leg & 2 leg chain assemblies
- Electrolytic polished finish provides superior protection in harsh environments
- Highly resistant to corrosion
- Increased longevity
- Made in Germany



STANDARDS
BRIGHT POLISHED AISI 316L

UOM: /METRE

TYPE	CHAIN WILL	DIMENSIONS MM				WEIGHT
	t	d	t	b ₁ MIN	b ₂ MAX	KG
*CK 5	0.63	5.0	15.0	6.5	18.5	0.540
KW-CK6	0.90	6.0	18.0	7.8	22.2	0.800
KW-CK7	1.25	7.0	21.0	9.1	25.9	1.100
KW-CK8	1.55	8.0	24.0	10.4	29.6	1.400
KW-CK10	2.45	10.0	30.0	13.0	37.0	2.200
KW-CK13	3.85	13.0	39.0	16.9	48.1	3.800
KW-CK16	6.00	16.0	48.0	20.8	59.2	5.700

*Not stocked. Available on Request.



GRADE 60 OBLONG MASTER CAGF SAND BLASTED 10MM - 36MM

FEATURES AND BENEFITS

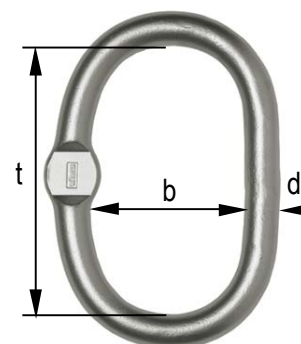
- Suitable for 1 leg & 2 leg chain assemblies
- Highly resistant to corrosion
- Increased longevity
- Grade 60 Stainless Steel
- Made in Germany

STANDARDS
SAND BLASTED AISI 318LN

UOM: EACH

TYPE	WILL		FOR CHAIN		DIMENSIONS MM			WEIGHT
	t		1 LEG	2 LEG 90°	d	t	b	KG
*KW-CAGF10	0.63		5	4	10	80	50	0.150
KW-CAGF13	1.55		6/7/8	5/6	13	110	60	0.340
KW-CAGF16	2.45		10	7/8	16	110	60	0.530
KW-CAGF22	6.00		13/16	13	22	160	90	1.500

*On Request. *Angle of indication 90°



GRADE 60 SUB-ASSEMBLY CAKF SAND BLASTED 10MM - 36MM

FEATURES AND BENEFITS

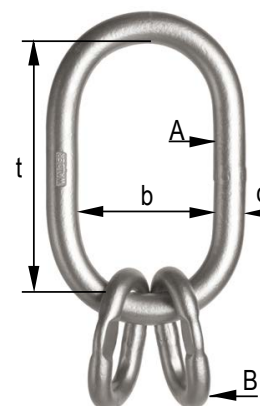
- Suitable for 3 leg & 4 leg chain assemblies
- Increased longevity
- Made in Germany

STANDARDS
SAND BLASTED AISI 318LN

UOM: EACH

TYPE	WILL		FOR CHAIN	DIMENSIONS MM			WEIGHT
	90°	120°		d	t	b	
*CAKF13/10	1.25	0.90	5	A 13 / B 10	110 / 44	60 / 25	0.520
KW-CAKF16/13	2.50	1.80	6	A 16 / B 13	110 / 54	60 / 25	0.970
KW-CAKF18/16	3.15	2.25	7/8	A 18 / B 16	135 / 70	75 / 34	1.600
KW-CAKF22/16	5.00	3.60	10	A 22 / B 18	160 / 85	90 / 40	2.760
*CAKF26/22	8.00	5.70	13	A 26 / B 22	180 / 115	100 / 50	4.450
*CAKF32/26	10.00	7.50	16	A 32 / B 26	200 / 140	110 / 65	7.550

*On Request.



GRADE 60 COMPONENTS

cromox[®]

GRADE 60 CLEVIS HOOKS CGHF WITH SAFETY LATCH SAND BLASTED 5MM - 16MM

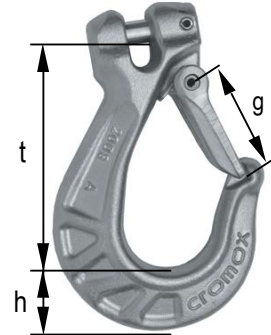
FEATURES AND BENEFITS

- Safety latch to minimise risk of damage

STANDARDS
SAND BLASTED AISI 318LN

UOM: EACH

TYPE	WILL	DIMENSIONS MM			WEIGHT
	t	t	g	h	KG
*CGHF 05	0.60	79	25	22	0.400
KW-CGHF 06	0.90	78	25	22	0.400
KW-CGHF07/08	1.50	97	32	28	0.760
KW-CGHF10	2.45	121	41	34	1.440



cromox[®]

GRADE 60 EYE HOOKS COHF WITH SAFETY LATCH SAND BLASTED 4MM - 18MM

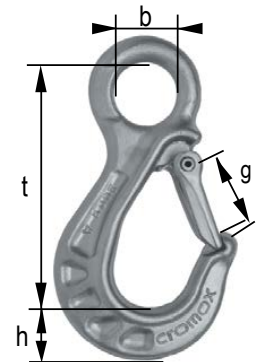
FEATURES AND BENEFITS

- Safety latch to minimise risk of damage

STANDARDS
SAND BLASTED AISI 318LN

UOM: EACH

TYPE	WILL	DIMENSIONS MM				WEIGHT
	t	t	g	b	h	KG
KW-COHF05/06	0.90	100	25	25	22	0.350
KW-COHF07/08	1.55	126	32	27	28	0.790
KW-COHF10	2.45	160	39	37	34	1.370
KW-COHF13	3.85	190	51	48	45	3.000
*COHF16	6.00	230	66	55	51	4.800



cromox[®]

GRADE 60 SELF LOCKING CLEVIS HOOKS CGSL 4/5MM - 10MM

FEATURES AND BENEFITS

- High WLL
- Exchangeable safety mechanism
- Best corrosion resistant
- Grade 60 Stainless Steel Selflocking Hook
- Made in Germany

STANDARDS
SAND BLASTED AISI 318LN

UOM: EACH

TYPE	WILL	DIMENSIONS MM			WEIGHT
	t	t	g	h	KG
KW-CGSL 05	0.63	83	28	19	0.280
KW-CGSL06	0.90	96	33	22	0.440
*CGSL07	1.25	109	37	25	0.640
KW-CGSL08	1.55	122	41	28	0.880
KW-CGSL10	2.45	148	50	34	1.600



*Not stocked. Available on Request.

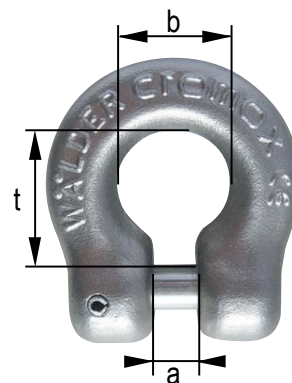


GRADE 60 CLEVIS SHACKLES CGS TESTED SAND BLASTED 6MM - 16MM

STANDARDS
SAND BLASTED AISI 318LN

UOM: EACH

TYPE	WILL	DIMENSIONS MM			WEIGHT
	t	t	b	a	KG
KW-CGS06	0.90	26	20	7	0.160
KW-CGS07/08	1.50	30	23	9	0.230
KW-CGS10	2.40	40	28	11	0.460
KW-CGS13	3.85	48	38	14	0.675
KW-CGS16	6.00	50	44	17	1.130



GRADE 60 CONNECTING LINKS CVG TESTED BLASTED 5MM - 16MM

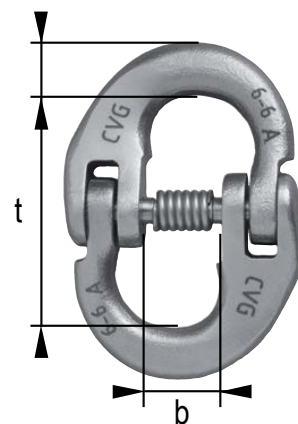
FEATURES AND BENEFITS

- Suitable for lifting in corrosive environments
- Conventional style connecting link to Grade 60 chain
- Suitable for lifting applications
- Grade 60 Stainless Steel Connecting Link
- Made in Germany

STANDARDS
SAND BLASTED AISI 318LN

UOM: EACH

TYPE	WILL	DIMENSIONS MM			WEIGHT
	t	t	b	d	KG
KW-CVG05	0.63	33.6	12.45	6.95	0.045
KW-CVG06	0.90	42	15	7.5	0.085
*CVG07	1.25	42	15	9.5	0.090
KW-CVG08	1.55	55	18	11.5	0.150
KW-CVG10	2.45	69	22	14.50	0.310
KW-CVG13	3.85	75	29	15.0	0.515
KW-CVG16	6.00	92	36	18.5	0.980



GRADE 60 COMPONENTS

CROMOX®

GRADE 60 D-SHACKLES CSA TESTED BRIGHT POLISHED 4MM - 13MM

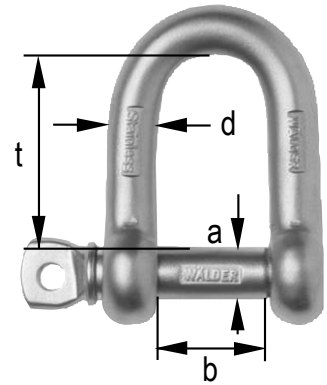
FEATURES AND BENEFITS

- High strength & versatile
- Suitable for corrosive environments
- Grade 60 Stainless Steel
- Made in Germany

STANDARDS
AISI 316L

UOM: EACH

TYPE	WILL	DIMENSIONS MM				WEIGHT
	t	a	d	t	b	KG
KW-CSA04	0.40	7	6	23	12	0.035
KW-CSA05	0.63	9	8	24	17	0.070
KW-CSA06	0.90	11	10	35	20	0.135
KW-CSA08	1.55	13	12	42	25	0.220
KW-CSA10	2.45	18	16	64	32	0.510
KW-CSA13	3.45	21	19	76	38	0.910



CROMOX®

GRADE 60 SAFETY SHACKLES CSS TESTED BRIGHT POLISHED 4MM - 13MM

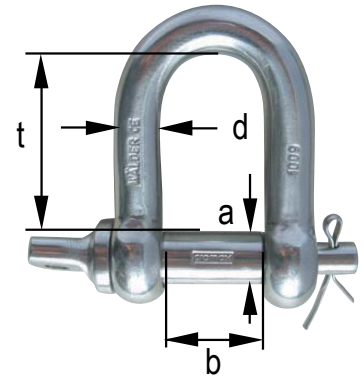
FEATURES AND BENEFITS

- Safety pin to ensure the pin is captured
- High strength & versatile
- Suitable for corrosive environments

STANDARDS
AISI 316L

UOM: EACH

TYPE	WILL	DIMENSIONS MM				WEIGHT
	t	a	d	t	b	KG
KW-CSS04	0.30	7	6	23	12	0.035
KW-CSS05	0.50	9	8	24	17	0.070
KW-CSS06	0.75	11	10	35	20	0.135
KW-CSS08	1.25	13	12	42	25	0.225
KW-CSS10	2.00	18	16	64	32	0.540
KW-CSS13	3.20	21	19	76	38	0.945



GRADE 60 SHORTENERS CVE TESTED SAND BLASTED 5MM - 13MM

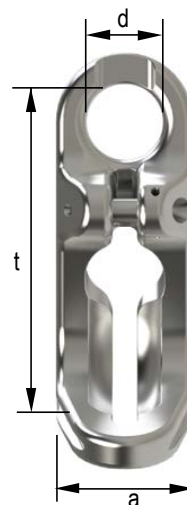
FEATURES AND BENEFITS

- Simple handling
- Safety of use through special design
- Repositioned flat section usable in welded and modular systems

STANDARDS
SAND BLASTED AISI 318LN

UOM: EACH

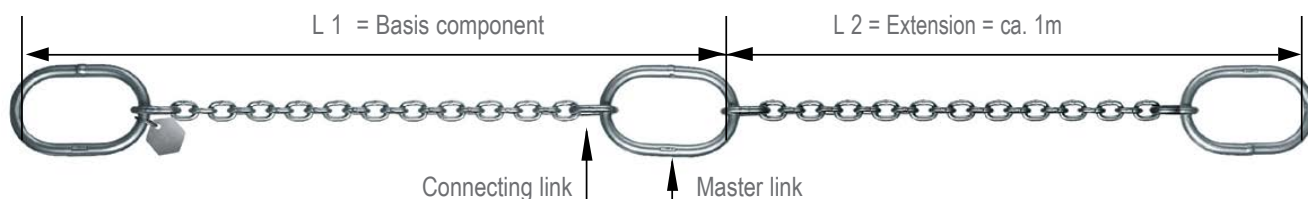
TYPE	WILL	DIMENSIONS MM			WEIGHT
	t	d	t	a	KG
CVE05	0.63	24	93	40	0.280
CVE06	0.90	25	112	45	0.455
CVE07	1.25	27	131	53	0.750
CVE08	1.55	28	148	56	1.000
CVE10	2.45	38	187	70	2.000
CVE13	3.85	48	243	91	4.500



STAINLESS GRADE 60 PUMP CHAINS

Cromox pump chains enable safe lifting and lowering of pumps and aeration devices. Accompanied with WLL-tag and certificate. In addition to our standard sizes, we offer customized solutions.

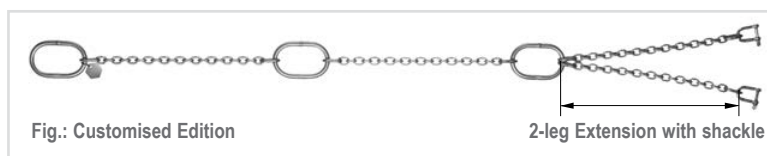
MANY SIZES ALSO AVAILABLE IN **DUPLEX!**



GRADE 60 PUMP CHAINS CPK WELDED TESTED 4M - 16MM

FEATURES AND BENEFITS

- Versatile heavy duty solutions
- Two-leg system for pumps with two lifting points
- Enables safe lifting & lowering of pumps & aeration devices
- Available in AISI 318LN on request
- Tested & tagged
- Grade 60 Stainless Steel AISI 316L
- 1.5m spacings as standard
- Made in Germany



STANDARDS
SIMILAR DIN 5688-1

UOM: EACH

TYPE	WILL	MASTER LINK	CHAIN	JOINING LINK
	t	MM	MM	MM
KW-CPK4	0.40	8 x 54 x 30	4 x 16	5 x 22 x 9
KW-CPK5	0.63	10 x 80 x 50	5 x 15	6 x 26 x 13
KW-CPK6	0.90	13 x 110 x 60	6 x 18	8 x 35 x 19
KW-CPK7	1.25	13 x 110 x 60	7 x 21	8 x 35 x 19
KW-CPK8	1.55	13 x 110 x 60	8 x 24	10 x 44 x 25
KW-CPK10	2.45	16 x 110 x 60	10 x 30	13 x 54 x 25
KW-CPK13	3.85	22 x 160 x 90	13 x 39	16 x 70 x 34
KW-CPK16	6.00	22 x 160 x 90	16 x 48	18 x 85 x 40

Standard Spacing ≈ 1.5m centres ; other lengths by request Custom fittings and fabrications available L 1 = Approx 150mm + one additional masterlink

STAINLESS STEEL WIRE ROPES & FITTINGS

STAINLESS STEEL IS MAINLY USED IN CORROSIVE APPLICATIONS, IN PARTICULAR MARINE AND WASTE MANAGEMENT ENVIRONMENTS. OTHER APPLICATIONS INCLUDE DECORATIVE BALUSTRADING AND OUTDOOR USE.

WIRE ROPE

Wire rope is complex and therefore it is critical to determine which configuration is best for a project or application. Consideration needs to be given to the kind of project you are doing and how strong and durable you require your wire rope to be.

Choosing the right wire rope for your application will not only affect performance, but will also effect its' longevity .



There are three common constructions of stainless steel wire rope used in rigging applications.

7 X 19

The most common and versatile construction of stainless steel wire rope is 7 x 19. It consists of 7 strands each with 19 wires and is the most flexible and easy construction to work with. 7 x 19 can be used in either fixed rigging or for limited working rope applications.

7 X 7

Wire rope is not as flexible as 7 x 19, is 7 x 7 wire rope, it consists of 7 strands each with 7 wires. 7 x 7 is an excellent choice for fixed rigging applications such as balustrading and safety barrier rails.

1 X 19

A single strand wire rope is the 1 x 19, and consists of a single strand with 19 wires. This rope is very stiff and is therefore suitable for fixed "straight line" rigging only (such as mast stays, guy ropes and structural applications).





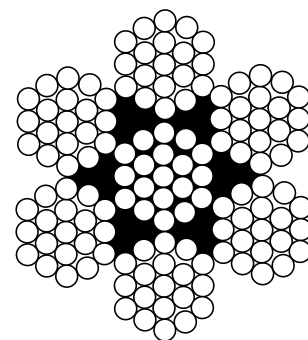
7X19 G304 STAINLESS STEEL RHOL WIRE ROPE

FEATURES AND BENEFITS

- Corrosion resistant
- Excellent flexibility and easy construction to work with
- Suitable for balustrading and rigging applications

UOM: / METRE

CODE	DIA (MM)	CON-STRUCTION	GRADE	FINISH	LAY	MBF (kN)	APPROX. MASS (KG/100M)	METRE / REEL
703016	1.6	7x19	304	Stainless Steel	RHOL	1.49	1.2	305
703020	2	7x19	304	Stainless Steel	RHOL	2.89	1.61	305
703025	2.5	7x19	304	Stainless Steel	RHOL	4.4	2.44	305
703030	3	7x19	304	Stainless Steel	RHOL	6.12	3.52	305
703040	4	7x19	304	Stainless Steel	RHOL	9.27	6.71	305
703050	5	7x19	304	Stainless Steel	RHOL	17.84	9.81	305
703055	5.5	7x19	304	Stainless Steel	RHOL	21.5	12.25	305
703060	6	7x19	304	Stainless Steel	RHOL	25.51	14.21	305
703080	8	7x19	304	Stainless Steel	RHOL	37.07	26.9	305
703100	10	7x19	304	Stainless Steel	RHOL	50.46	39.24	305
703112	12	7x19	304	Stainless Steel	RHOL	90.5	56.44	305
703116	16	7x19	304	Stainless Steel	RHOL	146	100.4	305
703120	20	7x19	304	Stainless Steel	RHOL	220	157	305



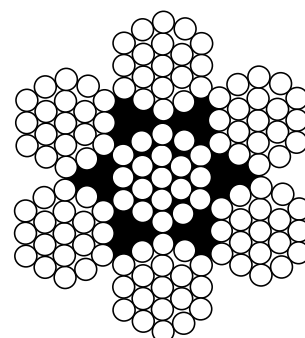
7X19 G316 STAINLESS STEEL RHOL WIRE ROPE

FEATURES AND BENEFITS

- Highest corrosion resistant
- For marine and waste environments
- Suitable for balustrading and rigging applications

UOM: / METRE

CODE	DIA (MM)	CON-STRUCTION	GRADE	FINISH	LAY	MBF (kN)	APPROX. MASS (KG/100M)	METRE / REEL
720016	1.6	7x19	304	Stainless Steel	RHOL	1.9	1.03	305
720025	2.4	7x19	304	Stainless Steel	RHOL	3.64	2.38	305
720030	3.2	7x19	304	Stainless Steel	RHOL	5.24	4.18	305
720040	4	7x19	304	Stainless Steel	RHOL	8.21	6.71	305
720050	5	7x19	304	Stainless Steel	RHOL	11.08	9.5	305
720060	6.4	7x19	304	Stainless Steel	RHOL	21.01	17	305
720080	8	7x19	304	Stainless Steel	RHOL	32.85	26.9	305



STAINLESS STEEL WIRE ROPE



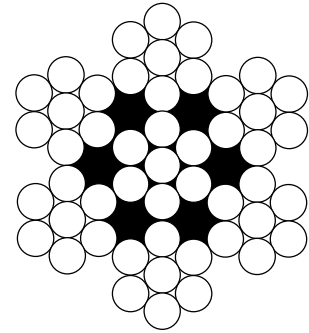
7X7 G304 STAINLESS STEEL RHOL WIRE ROPE

FEATURES AND BENEFITS

- Highest corrosion resistant
- For marine and waste environments
- Suitable for balustrading and rigging applications

UOM: / METRE

CODE	DIA (MM)	CON-STRUCTION	GRADE	FINISH	LAY	MBF (kN)	APPROX. MASS (KG/100M)	METRE / REEL
702012	1.2	7x7	304	Stainless Steel	RHOL	0.9	0.6	305
702015	1.5	7x7	304	Stainless Steel	RHOL	1.87	0.99	305
702016	1.6	7x7	304	Stainless Steel	RHOL	1.61	1.07	305
702020	2	7x7	304	Stainless Steel	RHOL	2.49	1.68	305
702025	2.5	7x7	304	Stainless Steel	RHOL	5.56	2.53	305
702030	3	7x7	304	Stainless Steel	RHOL	6.87	3.65	305
702040	4	7x7	304	Stainless Steel	RHOL	10.01	6.73	305
702050	5	7x7	304	Stainless Steel	RHOL	12.3	10.12	305
702060	6	7x7	304	Stainless Steel	RHOL	23.17	14.75	305
702080	8	7x7	304	Stainless Steel	RHOL	41.2	26.22	305



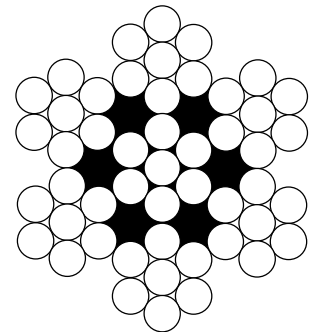
7X7 G316 STAINLESS STEEL RHOL WIRE ROPE

FEATURES AND BENEFITS

- Highest corrosion resistant
- For marine and waste environments
- Suitable for balustrading and rigging applications

UOM: / METRE

CODE	DIA (MM)	CON-STRUCTION	GRADE	FINISH	LAY	MBF (kN)	APPROX. MASS (KG/100M)	METRE / REEL
702116	1.6	7x7	316	Stainless Steel	RHOL	1.89	1.12	305
702120	2	7x7	316	Stainless Steel	RHOL	2.58	1.62	305
702125	2.4	7x7	316	Stainless Steel	RHOL	3.64	2.38	305
702130	3.2	7x7	316	Stainless Steel	RHOL	6.96	4.32	305
702140	4	7x7	316	Stainless Steel	RHOL	9.5	6.48	305
702150	4.8	7x7	316	Stainless Steel	RHOL	14.64	9.84	305
702160	6.4	7x7	316	Stainless Steel	RHOL	25.32	16.37	305
702180	8	7x7	316	Stainless Steel	RHOL	35.6	25.96	305





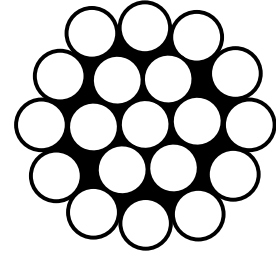
1X19 G316 STAINLESS STEEL RHOL WIRE ROPE

FEATURES AND BENEFITS

- Highest corrosion resistant
- For marine and waste environments
- Suitable for balustrading and rigging applications

UOM: / METRE

CODE	DIA (MM)	CON-STRUCTION	GRADE	FINISH	LAY	MBF (kN)	APPROX. MASS (KG/100M)	METRE / REEL
701115	1.6	1x19	316	Stainless Steel	RHOL	1.98	1.3	305
701120	2	1x19	316	Stainless Steel	RHOL	3.17	2	305
701130	3.2	1x19	316	Stainless Steel	RHOL	8.34	5.08	305
701140	4	1x19	316	Stainless Steel	RHOL	13.05	8.17	305
701150	5	1x19	316	Stainless Steel	RHOL	18.59	11.57	305
701180	8	1x19	316	Stainless Steel	RHOL	52.01	32.8	305



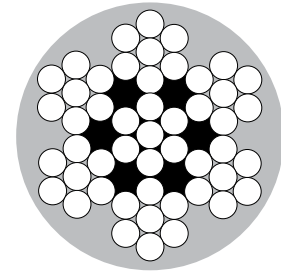
7X7 PVC G304 STAINLESS STEEL RHOL PVC COATED WIRE ROPE

FEATURES AND BENEFITS

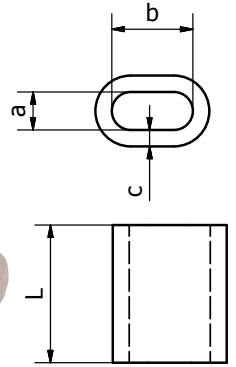
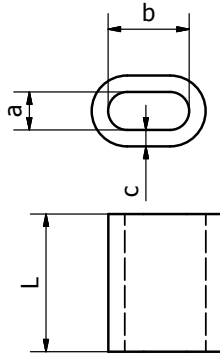
- Highest corrosion resistant
- For marine and waste environments
- Suitable for balustrading and rigging applications

UOM: / METRE

CODE	DIA (MM)	CON-STRUCTION	GRADE	FINISH	PVC	LAY	MBF (kN)	APPROX. MASS (KG/100M)	METRE / REEL
705030	3	7x7	304	Stainless Steel	White	RHOL	10.01	6.6	305
705040	4	7x7	304	Stainless Steel	White	RHOL	10.67	7.5	305
705050	5	7x7	304	Stainless Steel	White	RHOL	16.44	11.65	305



STAINLESS STEEL FERRULES



COPPER FERRULES TO DIN 3093

FEATURES AND BENEFITS

- Copper finish provide excellent resistant to rust
- Suitable for machine swaging stainless steel wire rope

UOM: / EACH

CODE	SIZE (MM)	a (MM)	b (MM)	c (MM)	L (MM)	PACK QTY
617402	2	2.2	4.4	0.90	7	5000
617402A	2.5	2.7	5.4	1.05	9	5000
617403	3	3.3	6.6	1.25	11	4000
617403A	3.5	3.8	7.6	1.5	13	3000
617404	4	4.4	8.8	1.7	14	1000
617404A	4.5	4.9	9.8	1.9	16	1000
617405	5	5.5	11.0	2.1	18	1000
617406	6	6.6	13.2	2.5	21	1000
617406A	6.5	7.2	14.4	2.7	23	1000
617407	7	7.8	15.6	2.9	25	500
617408	8	8.8	17.6	3.3	28	100
617409	9	9.9	19.8	3.7	32	100
617410	10	10.9	21.8	4.1	35	100
617411	11	12.1	24.2	4.5	39	100
617412	12	13.2	26.4	4.9	42	100
617413	13	14.2	28.4	5.4	46	100
617414	14	15.3	30.6	5.8	49	100
617416	16	17.5	35.0	6.7	56	50
617418	18	19.6	39.2	7.6	63	25
617420	20	21.7	43.4	8.4	70	20

NICKLE PLATED FERRULES TO DIN 3093

FEATURES AND BENEFITS

- Copper plated provides high quality finish for aesthetics
- Suitable for hand swaging stainless steel wire rope

UOM: / EACH

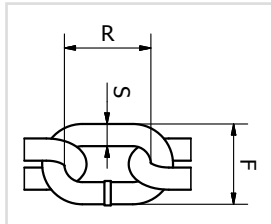
CODE	SIZE (MM)	a (MM)	b (MM)	c (MM)	L (MM)	PACK QTY
617416NP	1.6	1.8	3.6	1.05	6	100
617402NP	2	2.2	4.4	0.90	7	100
617402ANP	2.5	2.7	5.4	1.05	9	100
617403NP	3	3.3	6.6	1.25	11	100
617404NP	4	4.4	8.8	1.7	14	100
617405NP	5	5.5	11.0	2.1	18	100
617406NP	6	6.6	13.2	2.5	21	100

STAINLESS STEEL CHAIN

MANUFACTURED IN 304 AND 316 GRADE
Not suitable for any lifting or towing applications

FEATURES AND BENEFITS

- Electro polished finish for architectural use



GRADE 304 REGULAR LINK STAINLESS STEEL CHAIN

FEATURES AND BENEFITS

- Manufactured from 304 grade stainless
- Highly resistant to corrosion
- Suitable for marine applications

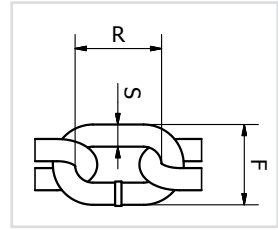
UOM: /METRE

CODE	NOMINAL SIZE (MM)	S (MM)	R (MM)	F (MM)	FINISH	METRES /100KG
147104	4	4	18.6	16	Stainless Steel	384.6
147106	6	6	26	23.5	Stainless Steel	137.3
147108	8	8	32.2	29.5	Stainless Steel	80
147110	10	10	39	36.2	Stainless Steel	49.6

Metres per drum are subject to + or - 10% on actual metreage

NOT TO BE USED FOR LIFTING

STAINLESS STEEL CHAINS



GRADE 316 REGULAR LINK STAINLESS STEEL CHAIN

FEATURES AND BENEFITS

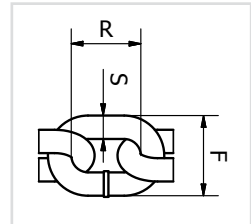
- Manufactured from 316 grade stainless
- Highly resistant to corrosion
- Suitable for marine applications

UOM: /METRE

CODE	NOMINAL SIZE (MM)	S (MM)	R (MM)	F (MM)	FINISH	METRES /100KG
146104	4	4	18.6	16	Stainless Steel	384.6
146106	6	6	26	23.5	Stainless Steel	137.3
146108	8	8	32.2	29.5	Stainless Steel	80
146110	10	10	39	36.2	Stainless Steel	49.6
146113	13	13	49.1	46.1	Stainless Steel	28.7

Metres per drum are subject to + or - 10% on actual metreage

NOT TO BE USED FOR LIFTING



GRADE 316 SHORT LINK STAINLESS STEEL CHAIN

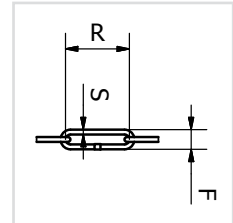
FEATURES AND BENEFITS

- Manufactured from 316 grade stainless
- Highly resistant to corrosion
- Suitable for marine applications

UOM: /METRE

CODE	NOMINAL SIZE (MM)	S (MM)	R (MM)	F (MM)	FINISH	METRES /100KG
146206	6	6	30.5	19.2	Stainless Steel	133.3
146208	8	8	40	25.6	Stainless Steel	74.8

NOT TO BE USED FOR LIFTING



GRADE 316 LONG LINK STAINLESS STEEL CHAIN

FEATURES AND BENEFITS

- Manufactured from 316 grade stainless
- Highly resistant to corrosion
- Suitable for marine applications

UOM: /METRE

CODE	NOMINAL SIZE (MM)	S (MM)	R (MM)	F (MM)	FINISH	METRES /100KG
146102L	2	2	26	8	Stainless Steel	1639

NOT TO BE USED FOR LIFTING

STAINLESS STEEL FITTINGS

STAINLESS STEEL FITTINGS

FEATURES AND BENEFITS

- Electro polish finish
- G316 stainless

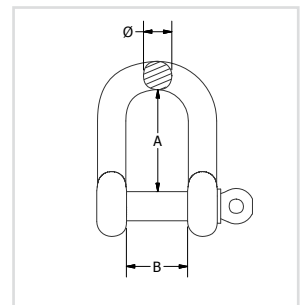
NOT TO BE USED FOR LIFTING



G316 STAINLESS STEEL STANDARD DEE SHACKLE

UOM: EACH

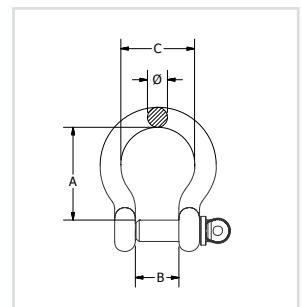
CODE	SIZE (MM)	GRADE	SHAPE	CLOSING METHOD	A (MM)	B (MM)	WEIGHT (KG)	PACK QTY
615404	4	316	Dee	Screw	15	8.3	0.007	1000
615405	5	316	Dee	Screw	17	11.3	0.013	500
615406	6	316	Dee	Screw	22	12.3	0.021	400
615408	8	316	Dee	Screw	28.6	17	0.052	120
615410	10	316	Dee	Screw	35	20	0.11	70
615412	12	316	Dee	Screw	45.5	25	0.19	40
615416	16	316	Dee	Screw	56	32	0.37	15
615419	19	316	Dee	Screw	67	38.5	0.72	10
615422	22	316	Dee	Screw	77	43	1.1	20
615425	25	316	Dee	Screw	85.5	46	1.6	15



GG316 STAINLESS STEEL STANDARD BOW SHACKLE

UOM: EACH

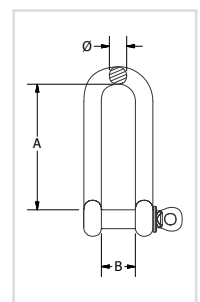
CODE	SIZE (MM)	GRADE	SHAPE	CLOSING METHOD	A (MM)	B (MM)	C (MM)	WEIGHT (KG)	PACK QTY
615505	5	316	Bow	Screw	23	10.8	17	0.02	500
615506	6	316	Bow	Screw	31	13	21	0.03	400
615508	8	316	Bow	Screw	36.5	17.5	28	0.06	120
615510	10	316	Bow	Screw	44	21.5	35.5	0.11	70
615512	12	316	Bow	Screw	52.5	27	41	0.22	40



G316 STAINLESS STEEL LONG DEE SHACKLE

UOM: EACH

CODE	SIZE (MM)	GRADE	SHAPE	CLOSING METHOD	A (MM)	B (MM)	WEIGHT (KG)	PACK QTY
611404	4	316	Dee	Screw	31.3	7.5	0.01	300
611406	6	316	Dee	Screw	45.3	13.5	0.03	200
611408	8	316	Dee	Screw	60	16.5	0.07	100
611410	10	316	Dee	Screw	75.5	20.8	0.16	50
611412	12	316	Dee	Screw	90	25	0.27	25



NOT TO BE USED FOR LIFTING



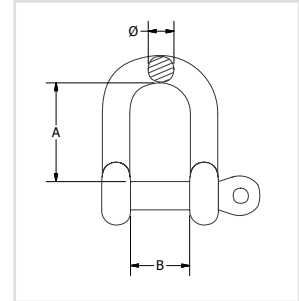
G316 STAINLESS STEEL “D” SHACKLE C/W CAPTIVE PIN

FEATURES AND BENEFITS

- Electro polish finish
- G316 stainless
- Captive pin

UOM: EACH

CODE	SIZE (MM)	GRADE	SHAPE	CLOSING METHOD	A (MM)	B (MM)	WEIGHT (KG)	PACK QTY
615305	5	316	Dee	Screw	17.8	10.4	0.01	500
615306	6	316	Dee	Screw	22.5	13	0.02	400
615308	8	316	Dee	Screw	24.5	17.3	0.05	100
615310	10	316	Dee	Screw	35.6	22.6	0.09	60
615312	12	316	Dee	Screw	42.4	25	0.18	40



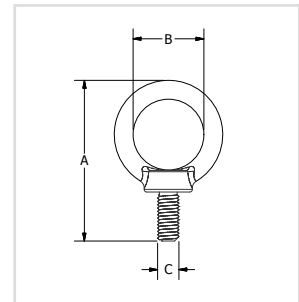
G316 STAINLESS STEEL “D” SHACKLE C/W CAPTIVE PIN

FEATURES AND BENEFITS

- Enables anchoring to a fixed surface
- Marine grade G316 Stainless finish

UOM: EACH

CODE	SIZE (MM)	GRADE	A (MM)	B (MM)	C (MM)	WEIGHT (KG)	PACK QTY
612406	6	316	37.4	16.8	M6	0.01	300
612408	8	316	47	20.6	M8	0.02	200
612410	10	316	60.7	25.6	M10	0.05	100
612412	12	316	72.3	29.7	M12	0.1	50
612416	16	316	86	35	M16	0.15	20



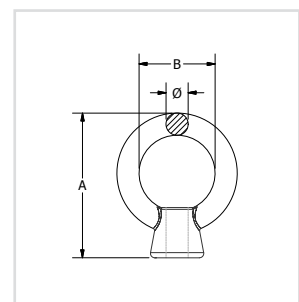
G316 STAINLESS STEEL EYE NUTS

FEATURES AND BENEFITS

- Enables anchoring to a fixed surface
- Marine grade G316 Stainless finish

UOM: EACH

CODE	SIZE (MM)	GRADE	A (MM)	B (MM)	C (MM)	WEIGHT (KG)	PACK QTY
612506	6	316	4.7	31.3	16.3	0.015	200
612508	8	316	5	38.7	21	0.024	200
612510	10	316	7	48.9	25.8	0.05	100
612512	12	316	9.6	59.7	30.3	0.08	50
612516	16	316	12	70.3	35.3	0.18	50



STAINLESS STEEL FITTINGS



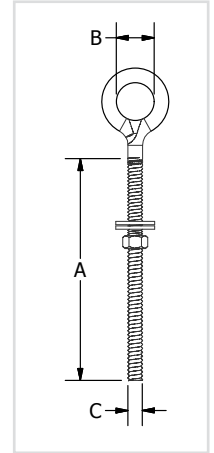
G304 STAINLESS STEEL EYE BOLT WITH NUT AND TWO WASHERS

FEATURES AND BENEFITS

- Supplied with nut & washers
- Enables anchoring to a fixed surface Grade
- G304 stainless finish

UOM: EACH

CODE	SIZE (MM)	GRADE	A (MM)	B (MM)	C (MM)	WEIGHT (KG)	PACK QTY
618451	5 x 50	304	50	11	M5	0.01	300
618461	6 x 40	304	40	13	M6	0.02	200
618462	6 x 80	304	80	13	M6	0.03	200
618463	6 x 55	304	55	13	M6	0.02	200
618464	6 x 100	304	100	13	M6	0.03	200
618481	8 x 80	304	80	17	M8	0.06	120
618482	8 x 100	304	100	17	M8	0.06	100
618483	8 x 120	304	120	17	M8	0.07	100
618493	10 x 120	304	120	21	M10	0.12	50
618496	12 x 120	304	120	25	M12	0.17	25



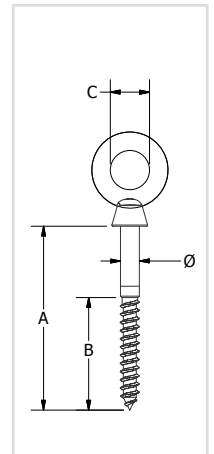
G316 STAINLESS STEEL EYE SCREW

FEATURES AND BENEFITS

- Electro polish finish
- G316 stainless
- Ideal fixture to timber posts for Balustrade

UOM: EACH

CODE	SIZE (MM)	GRADE	DIA Ø (MM)	A (MM)	B (MM)	C (MM)	WEIGHT (KG)	PACK QTY
618060	6x60	316	6	60	36	14	0.027	250
618080	8x80	316	8	81	48	18.4	0.05	200
618010	10x100	316	10	98	60	22	0.12	50
618012	12x120	316	12	122.5	72	27.3	0.2	20



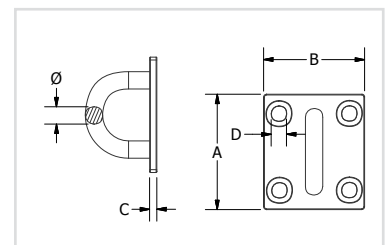
G304 STAINLESS STEEL SQUARE PAD EYE

FEATURES AND BENEFITS

- Ideal for balustrade
- Easy fixture point to attach stainless steel fittings
- G304 Stainless finish

UOM: EACH

CODE	SIZE (MM)	GRADE	DIA Ø (MM)	A (MM)	B (MM)	C (MM)	D (MM)	WEIGHT (KG)	PACK QTY
616205	5	304	4.1	35	30.6	2.4	5	0.01	200
616206	6	304	5.3	40	40.8	2.5	6	0.03	100
616208	8	304	5.6	50	45.5	3.5	8	0.06	80





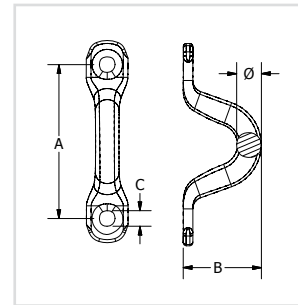
G304 STAINLESS STEEL WIRE EYE SADDLES

FEATURES AND BENEFITS

- Ideal for balustrade
- Easy fixture point to attach stainless steel fittings
- G304 Stainless finish

UOM: EACH

CODE	SIZE (MM)	GRADE	A (MM)	B (MM)	C (MM)	WEIGHT(KG)	PACK QTY
617704	4	304	32	15.8	3.2	0.004	1400
617705	5	304	40	18	4.3	0.007	600
617706	6	304	44	22	5.3	0.013	500
617708	8	304	51	23	5.2	0.025	200



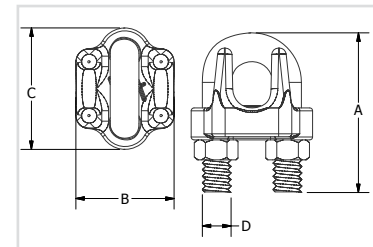
G316 STAINLESS STEEL WIRE ROPE GRIPS

FEATURES AND BENEFITS

- Designed to grip stainless steel wire rope
- Idea for balustrade applications
- Marine G316 finish

UOM: EACH

CODE	ROPE SIZE (MM)	GRADE	A (MM)	B (MM)	C (MM)	D (MM)	WEIGHT(KG)	PACK QTY
612202	2	316	18	13	15.3	M3	0.01	800
612203	3	316	24.5	14.5	15.8	M4	0.015	800
612204	4	316	24	18	18.5	M4	0.02	500
612205	5	316	29	19.6	23	M5	0.022	300
612206	6	316	31	20.5	26.3	M6	0.03	200
612208	8	316	41	27	33.5	M8	0.08	100
612210	10	316	52	33.8	42.7	M10	0.15	50
612212	12	316	61	37.8	50	M12	0.23	30
612214	14	316	67.5	42	50.6	M12	0.28	25
612216	16	316	76	47	60	M14	0.41	20
612220	20	316	79	51	61.5	M14	0.47	10
612225	25	316	110	60	75.5	M16	0.93	5



STAINLESS STEEL FITTINGS



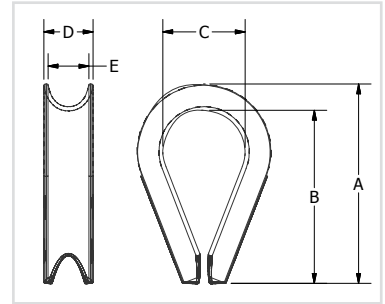
G316 STAINLESS STEEL WIRE ROPE THIMBLES

FEATURES AND BENEFITS

- Marine G316 Finish
- Designed to protect wire rope
- Ideal for swaging wire rope eyes

UOM: EACH

CODE	ROPE SIZE (MM)	GRADE	A (MM)	B (MM)	C (MM)	D (MM)	E (MM)	WEIGHT(KG)	PACK QTY
612302	2	316	20.6	18	7.5	4.5	3	0.005	1000
612303	3	316	24.3	21	10	6	4.3	0.007	800
612304	4	316	27.8	24.8	11	6.6	5.2	0.008	500
612305	5	316	30.5	26	13	8.5	6.8	0.009	400
612306	6	316	37	32.6	15.5	10	8.8	0.01	250
612308	8	316	51.5	45.5	23	12.5	10	0.02	130
612310	10	316	56.4	50	27	14.6	12	0.03	50
612312	12	316	68	61	32.5	18	14.5	0.05	30
612316	16	316	82.7	75	37.5	22	19	0.09	25



STAINLESS STEEL HOOKS & TURNBUCKLES

FEATURES AND BENEFITS

- Tensioning device for wire
- Used in balustrade applications
- Marine G316 Finish and G304 stainless steel finish

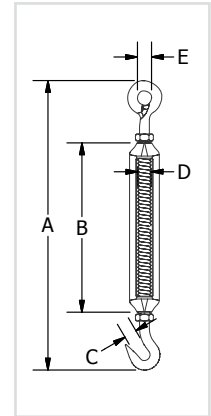
NOTE:- NOT SUITABLE FOR LIFTING



G316 STAINLESS STEEL HOOK AND EYE TURNBUCKLES WITH LOCK NUTS

UOM: EACH

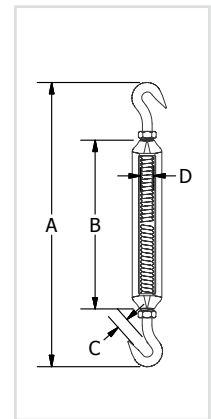
CODE	THREAD SIZE (MM)	GRADE	A (MM)	B (MM)	C (MM)	D (MM)	E (MM)	WEIGHT(KG)	PACK QTY
600404	4	316	110	61.5	9	M4	8	0.02	300
600405	5	316	127.5	71	9.5	M5	10	0.05	150
600406	6	316	163	90.5	9	M6	12	0.08	90
600408	8	316	212	122	10.3	M8	14	0.15	50
600410	10	316	259	151.5	12.5	M10	16	0.29	20
600412	12	316	321	201	14	M12	18	0.59	10
600416	16	316	397	244	16	M16	26	0.09	5



G316 STAINLESS STEEL HOOK AND HOOK TURNBUCKLES WITH LOCK NUTS

UOM: EACH

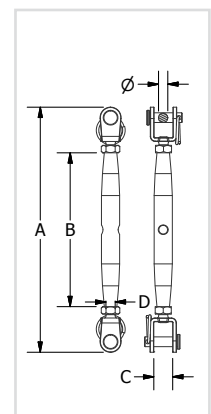
CODE	THREAD SIZE (MM)	GRADE	A (MM)	B (MM)	C (MM)	D (MM)	WEIGHT(KG)	PACK QTY
600404H	4	316	116	61.5	9	M4	0.02	300
600405H	5	316	130	71	9.5	M5	0.05	150
600406H	6	316	167	90.5	8.5	M6	0.08	90
600408H	8	316	214	122	10.3	M8	0.15	50
600410H	10	316	265	151.5	12.5	M10	0.29	20
600412H	12	316	320	201	15	M12	0.59	10
600416H	16	316	385	244	16	M16	0.09	5



G316 STAINLESS STEEL JAW AND JAW BOTTLE SCREW

UOM: EACH

CODE	THREAD SIZE (MM)	GRADE	A (MM)	B (MM)	C (MM)	D (MM)	WEIGHT(KG)	PACK QTY
601505	5	316	138	81	10.3	M5	0.04	80
601506	6	316	153	92	10.3	M6	0.07	50
601508	8	316	188	112	11.2	M8	0.15	50
601510	10	316	212	121	15	M10	0.28	50
601512	12	316	266	150	17.5	M12	0.49	30



STAINLESS STEEL FITTINGS



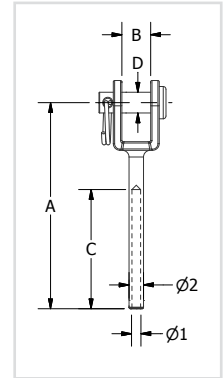
G316 STAINLESS STEEL SWAGE JAW TOGGLE TERMINAL

FEATURES AND BENEFITS

- Swage terminal designed for Balustrade
- Machine swaged to stainless wire for slimline appearance

UOM: EACH

CODE	ROPE SIZE (INCHES)	GRADE	DIA (MM)	DIA 2 (MM)	A (MM)	B (MM)	C (MM)	D (MM)	WEIGHT (KG)	PACK QTY
605303	1/8"	316	3.3	6.35	65	7.5	32	6	0.03	250
605304	5/32"	316	4.3	7.5	77	10	40	6	0.04	100
605305	3/16"	316	5.3	9	88	12	57	10	0.07	50
605306	1/4"	316	6.3	12.5	106	14	63	12	0.162	30



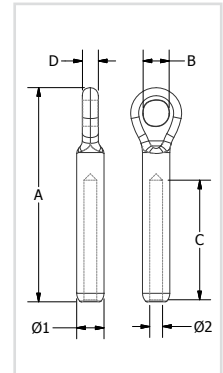
G316 STAINLESS STEEL SWAGE EYE END TERMINAL

FEATURES AND BENEFITS

- Swage terminal designed for Balustrade
- Machine swaged to stainless wire for slimline appearance

UOM: EACH

CODE	ROPE SIZE (INCHES)	ROPE SIZE (MM)	GRADE	DIA (MM)	DIA 2 (MM)	A (MM)	B (MM)	C (MM)	D (MM)	WEIGHT (KG)	PACK QTY
601803	1/8"	3.2	316	6.3	3.5	62.3	6.5	38.7	3.8	0.012	500
601804	5/32"	4	316	7.5	4.3	77	8.5	45	4.9	0.023	300
601805	3/16"	5	316	9	5.3	89	10.6	53.8	5.8	0.035	200
601806	1/4"	6	316	12.5	6.3	106.7	13	63	7.8	0.085	150
601808	5/16"	8	316	16	8.3	135	14.7	81.8	9.9	0.17	100



STAINLESS STEEL HOOKS

FEATURES AND BENEFITS

- Various range of stainless steel products
- Enables easy connection to secure to a fixing point
- Ideal for Balustrade & Architectural applications
- Marine G316 Finish or G304 stainless steel finish

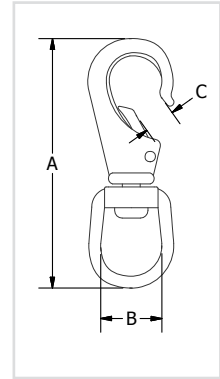
NOTE:- NOT SUITABLE FOR LIFTING



G316 STAINLESS STEEL SWIVEL EYE SNAP

UOM: EACH

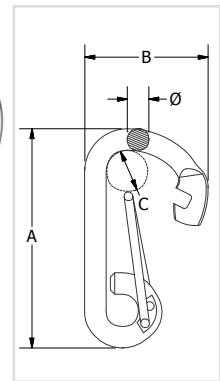
CODE	ROPE SIZE (MM)	GRADE	A (MM)	B (MM)	C (MM)	WEIGHT (KG)	PACK QTY
616812	12	316	87.5	21.5	9.8	0.05	100
616816	16	316	101	21.9	11.5	0.1	50
616825	25	316	118.5	22.3	12	0.15	10



G316 STAINLESS STEEL ANGLED SPRING HOOKS

UOM: EACH

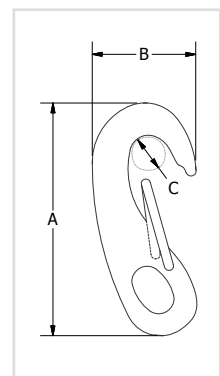
CODE	ROPE SIZE (MM)	GRADE	A (MM)	B (MM)	C (MM)	WEIGHT (KG)	PACK QTY
616606	6	316	60	34.5	12.5	0.03	500
616608	8	316	80	46	17	0.06	100
616610	10	316	100	55	23.5	0.19	50
616612	12	316	120	72	28	0.23	50



G316 STAINLESS STEEL SPRING SNAP HOOKS

UOM: EACH

CODE	ROPE SIZE (MM)	GRADE	A (MM)	B (MM)	C (MM)	WEIGHT (KG)	PACK QTY
616705	5	316	49.5	25	8	0.02	500
616707	7	316	68.8	31.5	12.5	0.04	100
616710	10	316	97	47	20	0.12	50



STAINLESS STEEL FITTINGS

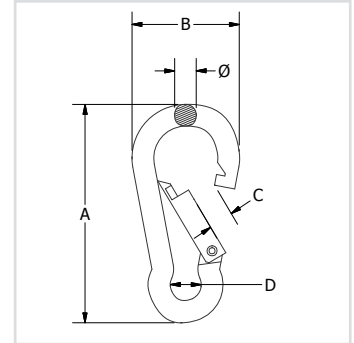


LIFTING & MATERIALS HANDLING | STAINLESS STEEL PRODUCTS

G316 STAINLESS STEEL CARBINE EYE HOOKS

UOM: EACH

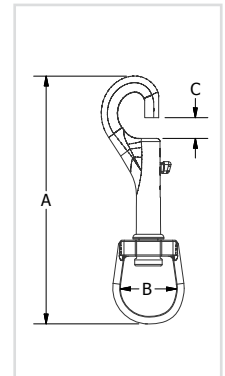
CODE	ROPE SIZE (MM)	GRADE	A (MM)	B (MM)	C (MM)	D (MM)	WEIGHT (KG)	PACK QTY
618304	4	316	42	20	6	5	0.01	500
618204	4.5	316	42	20.5	6	6.5	0.01	600
618305	5	316	50	26.5	7	7.8	0.02	400
618205	5	316	50	26.5	7	8	0.018	500
618306	6	316	60	30	7.5	7.8	0.03	300
618206	6	316	60	30	7.5	8.5	0.028	400
618308	8	316	80	40.5	10	10.8	0.06	100
618208	8	316	80	40.5	10	12	0.055	100
618310	10	316	100	50	12	14	0.15	50
618210	10	316	100	50	12	15	0.145	50
618211	11	316	120	58	16	19	0.18	40
618312	12	316	140	64	21	20	0.24	25



G316 STAINLESS STEEL SWIVEL EYE SNAP HOOK

UOM: EACH

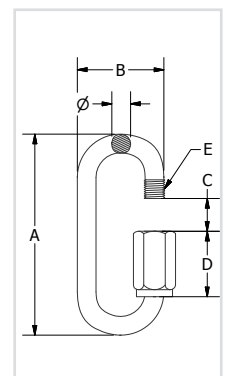
CODE	ROPE SIZE (MM)	GRADE	A (MM)	B (MM)	C (MM)	WEIGHT (KG)	PACK QTY
616995	16	316	90	15.8	12	0.05	140
616996	20	316	93	19	11.3	0.055	100



G304 STAINLESS STEEL QUICK LINKS

UOM: EACH

CODE	ROPE SIZE (MM)	GRADE	A (MM)	B (MM)	C (MM)	D (MM)	E (MM)	WEIGHT (KG)	PACK QTY
601604	4	316	43	18.5	7	14	4	0.011	300
601605	5	316	52	22.5	8.5	18	5	0.02	300
601606	6	316	61.5	27	9.5	21	6	0.03	200
601608	8	316	77	35.5	11	25	8	0.07	150
601610	10	316	89	42	13.5	28	10	0.14	100



STAINLESS STEEL FITTINGS

3

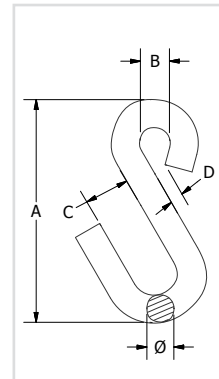


304 STAINLESS STEEL 'S' HOOKS

FEATURES AND BENEFITS

- Ideal for Balustrade & Architectural applications
- G304 stainless steel finish

UOM: EACH



CODE	ROPE SIZE (MM)	GRADE	A (MM)	B (MM)	C (MM)	D (MM)	WEIGHT(KG)	PACK QTY
617006	6	316	64.5	11	12	5	0.032	300
617008	8	316	75	16	17	4.5	0.06	300
617010	9.5	316	95	20.8	21	8.8	0.13	200

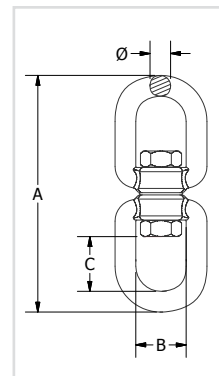


G316 STAINLESS STEEL EYE AND EYE SWIVELS

FEATURES AND BENEFITS

- Ideal for Balustrade & Architectural applications
- Versatile swivel connection
- Marine G316 Finish

UOM: EACH



CODE	ROPE SIZE (MM)	GRADE	A (MM)	B (MM)	C (MM)	D (MM)	WEIGHT(KG)	PACK QTY
619106	6	316	66	15	15.5	300	0.05	100
619108	8	316	90	19	21.5	475	0.12	100
619110	10	316	112	23.5	26.5	875	0.21	100
619113	13	316	148	33	33	1250	0.51	50
619116	16	316	184	38	44	2125	0.95	25

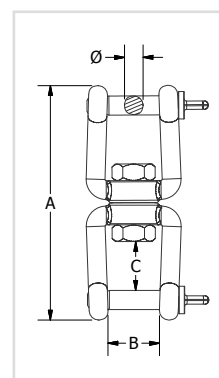
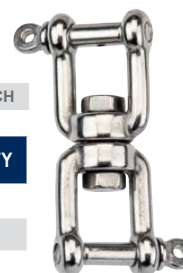


G316 STAINLESS STEEL JAW AND JAW SWIVELS

FEATURES AND BENEFITS

- Ideal for Balustrade & Architectural applications
- Easy Connection to fixtures
- Marine G316 Finish or G304 stainless steel finish

UOM: EACH



CODE	ROPE SIZE (MM)	GRADE	A (MM)	B (MM)	C (MM)	D (MM)	WEIGHT(KG)	PACK QTY
619306	6	316	64.4	12	12	300	0.07	100
619308	8	316	87	16	15.5	475	0.14	100
619310	10	316	111	18.5	20.5	875	0.258	50
619313	13	316	143.5	26	25.5	1250	0.62	25

FOR SAFE WORKING LIVES



safety

Bunzl Safety

55 Sarah Andrews Close
Erskine Park NSW 2759

1800 967 573

bunzlsafety.com.au